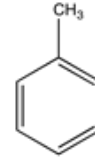


Identification

C₇H₈
 M = 92,14 g/mol
 CAS [108-88-3]
 EC number: 203-625-9
 Taric code: 2902 30 00


Synonyms

Methylbenzene, Phenylmethane

Applications

synthesis of organic products, solvents, as gasoline additive.

Specifications

assay (G.C.).....	min. 99,9 %	gold (Au).....	max. 0,1 ppm
identity (IR-spectrum).....	passes test	indium (In).....	max. 0,02 ppm
density (20°/4°).....	0,864 - 0,868	iron (Fe).....	max. 0,1 ppm
density (20°/20°).....	0,865 - 0,869	lead (Pb).....	max. 0,1 ppm
appearance.....	clear	lithium (Li).....	max. 0,02 ppm
colour (Hazen).....	max. 10	magnesium (Mg).....	max. 0,1 ppm
acidity.....	max. 0,0002 meq/g	manganese (Mn).....	max. 0,02 ppm
alkalinity.....	max. 0,0002 meq/g	molybdenum (Mo).....	max. 0,05 ppm
chlorides (Cl).....	max. 0,00005 %	nickel (Ni).....	max. 0,02 ppm
sulfates (SO ₄).....	max. 0,0001 %	platinum (Pt).....	max. 0,02 ppm
aluminium (Al).....	max. 0,5 ppm	silver (Ag).....	max. 0,02 ppm
antimony (Sb).....	max. 0,02 ppm	thallium (Tl).....	max. 0,05 ppm
arsenic (As).....	max. 0,02 ppm	tin (Sn).....	max. 0,1 ppm
barium (Ba).....	max. 0,1 ppm	titanium (Ti).....	max. 0,05 ppm
beryllium (Be).....	max. 0,02 ppm	vanadium (V).....	max. 0,05 ppm
bismuth (Bi).....	max. 0,1 ppm	zinc (Zn).....	max. 0,1 ppm
boron (B).....	max. 0,02 ppm	zirconium (Zr).....	max. 0,02 ppm
cadmium (Cd).....	max. 0,05 ppm	benzene (G.C.).....	max. 0,05 %
calcium (Ca).....	max. 0,5 ppm	sulphur compounds (as S).....	max. 0,003 %
chromium (Cr).....	max. 0,02 ppm	tiophene (C ₄ H ₄ S).....	max. 0,0001 %
cobalt (Co).....	max. 0,02 ppm	substances darkened by H ₂ SO ₄	passes test
copper (Cu).....	max. 0,02 ppm	residue on evaporation.....	max. 0,0005 %
gallium (Ga).....	max. 0,02 ppm	water (K.F.).....	max. 0,0075 %

Physical data

- Density: 0,87 g/cm³
- Solub. in water: (20 °C): 0,52 g/l
- Melting point: -95 °C
- Boiling point: 111 °C
- Flash point: 4 °C
- Ignition temperature: 535 °C
- Vapour pressure: (20 °C) 29 hPa
- Viscosity: (20 °C) 0,58 mPas
- Dipolar moment: (20 °C) 0,36 Debye
- Dielectric const.: (25 °C) 2,3
- Saturation conc.: (20 °C) 110 g/m³
- Expl. limit (upper): 8 Vol%
- Expl. limit (lower): 1,2 Vol%

Safety - GHS**Signal Word:** Danger**Hazard Statements:**

H225: Highly flammable liquid and vapour.
H304: May be fatal if swallowed and enters airways.
H361d: Suspected of damaging the unborn child.
H373: May cause damage to organs through prolonged or repeated exposure.
H315: Causes skin irritation.
H336: May cause drowsiness or dizziness.

Precautionary Statements:

P210: Keep away from heat / sparks / open flames / hot surfaces. - No smoking.
P301+P310: IF SWALLOWED: Immediately call a POISON CENTER or doctor/physician.
P303+P361+P353: IF ON SKIN (or hair): Remove / Take off immediately all contaminated clothing. Rinse skin with water / shower.
P370+P378: In case of fire: Use ... for extinction.
P405: Store locked up.
P501a: Dispose of contents / container in accordance with local / regional / national / international regulations.

Transport/storage

- ADR: 3 F1 II • UN 1294 • TOLUENE
- IMDG: 3 II • UN 1294 • TOLUENE
- IATA/ICAO: 3 II • UN 1294 • TOLUENE
- PAX: 353
- CAO: 364
- 10°C - 30°C