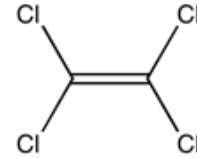


Identification

C₂Cl₄
M = 165,82 g/mol
CAS [127-18-4]
EC number: 204-825-9
Taric code: 2903 23 00

**Synonyms**

Perchloroethylene, Tetrachloroethylene, Ethylene tetrachloride

Applications

analytical chemistry, for spectroscopy, chromatography, laboratory reagent, solvents.

Specifications

assay (G.C.).....	min. 99,5 %	iron (Fe).....	max. 0,5 ppm
identity (IR-spectrum).....	passes test	lead (Pb).....	max. 0,2 ppm
density (20°/4°).....	1,621 - 1,623	nickel (Ni).....	max. 0,2 ppm
acidity.....	max. 0,002 meq/g	chloroform (G.C.).....	max. 0,05 %
alkalinity.....	max. 0,002 meq/g	trichloroethylene (G.C.).....	max. 0,1 %
chlorides (Cl).....	max. 0,001 %	residue on evaporation.....	max. 0,001 %
copper (Cu).....	max. 0,2 ppm	water (K.F.).....	max. 0,01 %

Physical data

- Density: 1,62 g/cm³
- Solub. in water: (20 °C): 0,2 g/l
- Melting point: -22 °C
- Boiling point: 121 °C
- Vapour pressure: (20 °C) 18 hPa
- Refraction index: (n 20 °C/D) 1,5053
- Viscosity: (20 °C) 0,89 mPas
- Dielectric const.: (20 °C) 2,4
- Saturation conc.: (20 °C) 126 g/m³

Safety - GHS

Signal Word: Warning

Hazard Statements:

- H315: Causes skin irritation.
H317: May cause an allergic skin reaction.
H319: Causes serious eye irritation.
H336: May cause drowsiness or dizziness.
H351: Suspected of causing cancer.
H411: Toxic to aquatic life with long lasting effects.

**Precautionary Statements:**

- P261: Avoid breathing dust / fume / gas / mist / vapours / spray.
P280: Wear protective gloves / protective clothing / eye protection / face protection.
P305+P351+P338: IF IN EYES: Rinse cautiously with water for several minutes. Remove contact lenses, if present and easy to do. Continue rinsing.
P321: Specific treatment (see on this label).
P405: Store locked up.
P501a: Dispose of contents / container in accordance with local / regional / national / international regulations.

Transport/storage

- ADR: 6.1 T1 III • UN 1897 • TETRACHLOROETHYLENE
- IMDG: 6.1 III • UN 1897 • TETRACHLOROETHYLENE
- IATA/ICAO: 6.1 III • UN 1897 • TETRACHLOROETHYLENE
- PAX: 605
- CAO: 612
- 10°C - 30°C