

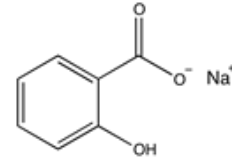
**Sodium salicylate, for analysis, ExpertQ®****Identification**C<sub>7</sub>H<sub>5</sub>NaO<sub>3</sub>

M = 160,11 g/mol

CAS [54-21-7]

EC number: 200-198-0

Taric code: 2918 21 00

**Synonyms**

Salicylic acid sodium salt

**Applications**

analytical chemistry, for the detection of: glucose (urine).

**Specifications**

assay (titration with HClO <sub>4</sub> , on dried sample) .... min. 99 %	cobalt (Co)..... max. 5 ppm
identity (IR-spectrum).....passes test	copper (Cu)..... max. 5 ppm
appearance of solution (10 %, H <sub>2</sub> O).....passes test	heavy metals (as Pb)..... max. 0,001 %
insoluble in water..... max. 0,02 %	iron (Fe)..... max. 0,001 %
chlorides (Cl)..... max. 0,002 %	lead (Pb)..... max. 5 ppm
sulfates (SO <sub>4</sub> )..... max. 0,01 %	magnesium (Mg)..... max. 0,001 %
cadmium (Cd)..... max. 5 ppm	nickel (Ni)..... max. 5 ppm
calcium (Ca)..... max. 0,005 %	zinc (Zn)..... max. 5 ppm
	loss on drying (105 °C)..... max. 0,2 %

**Physical data**

- Appearance: flakes, bright white or almost white
- Bulk density: ~ 320 kg/m<sup>3</sup>
- Solub. in water: (20 °C): soluble
- Melting point: 200 °C
- Ignition temperature: > 250 °C
- pH(100 g/l H<sub>2</sub>O, 20 °C) ~ 6,5

**Safety - GHS**

Signal Word: Warning

**Hazard Statements:**

H302: Harmful if swallowed.

H319: Causes serious eye irritation.

**Precautionary Statements:**

P280: Wear protective gloves / protective clothing / eye protection / face protection.

P264: Wash thoroughly after handling.

P305+P351+P338: IF IN EYES: Rinse cautiously with water for several minutes. Remove contact lenses, if present and easy to do. Continue rinsing.

P301+P312: IF SWALLOWED: Call a POISON CENTER or doctor/physician if you feel unwell.

P337+P313: If eye irritation persists: Get medical advice / attention.

P501a: Dispose of contents / container in accordance with local / regional / national / international regulations.

**Transport/storage**

- 10°C - 30°C