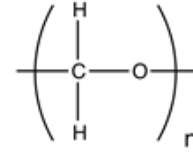


**Identification**

(CH<sub>2</sub>O)<sub>n</sub>  
CAS [30525-89-4]  
EC number: 200-001-8  
Taric code: 2912 60 00

**Synonyms**

Polyoxymethylene, Paraform

**Applications**

synthesis of organic products, disinfectant, cosmetics, fumigant, manufacturing of synthetic resins.

**Specifications**

assay (acidimetric, after oxidation) .....	95 - 100,5 %	acidity or alkalinity.....	passes test
identity (IR-spectrum).....	passes test	insoluble in water.....	max. 0,1 %
appearance of solution.....	passes test	heavy metals (as Pb).....	max. 0,001 %
		residue on ignition.....	max. 0,05 %

**Physical data**

- Spec. Density: 1,3 g/cm<sup>3</sup>
- Bulk density: 500 - 800 kg/m<sup>3</sup>
- Solub. in water: (20 °C): slightly soluble
- Melting point: 120 - 170 °C
- Flash point: 70 °C
- Ignition temperature: 370 °C
- Vapour pressure: (20 °C) 1,5 - 2 hPa
- Expl. limit (upper): 73 % Vol
- Expl. limit (lower): 7 % Vol
- pH(10 g/l H<sub>2</sub>O, 20 °C) 4,0 - 5,5

**Safety - GHS**

**Signal Word:** Warning

**Hazard Statements:**

- H228: Flammable solid.
- H351: Suspected of causing cancer.
- H302: Harmful if swallowed.
- H332: Harmful if inhaled.
- H315: Causes skin irritation.
- H319: Causes serious eye irritation.
- H317: May cause an allergic skin reaction.
- H335: May cause respiratory irritation.

**Precautionary Statements:**

- P210: Keep away from heat / sparks / open flames / hot surfaces. - No smoking.
- P241: Use explosion-proof electrical / ventilating / lighting / equipment.
- P305+P351+P338: IF IN EYES: Rinse cautiously with water for several minutes. Remove contact lenses, if present and easy to do. Continue rinsing.
- P370+P378: In case of fire: Use ... for extinction.
- P405: Store locked up.
- P501a: Dispose of contents / container in accordance with local / regional / national / international regulations.

**Transport/storage**

- ADR: 4.1 F1 III • UN 2213 • PARAFORMALDEHYDE
- IMDG: 4.1 III • UN 2213 • PARAFORMALDEHYDE
- IATA/ICAO: 4.1 III • UN 2213 • PARAFORMALDEHYDE
- PAX: 419
- CAO: 420
- 10°C - 30°C