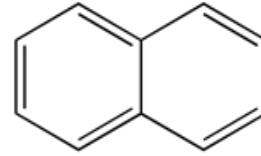


**Identification**

C<sub>10</sub>H<sub>8</sub>  
M = 128,16 g/mol  
CAS [91-20-3]  
EC number: 202-049-5  
Taric code:

**Synonyms**

Naphthalin

**Specifications**

assay (G.C.).....	min. 99 %	residue on ignition.....	max. 0,02 %
identity (IR-spectrum).....	passes test	water (K.F.).....	max. 0,3 %

**Physical data**

- Appearance: flakes, white or almost white
- Spec. Density: 1,15 g/cm<sup>3</sup>
- Bulk density: 600 kg/m<sup>3</sup>
- Solub. in water: (20 °C): 0,3 g/l
- Melting point: 79 - 82 °C
- Boiling point: 218 °C
- Flash point: 80 °C
- Ignition temperature: 540 °C
- Vapour pressure: (20 °C) 0,066 hPa
- Expl. limit (upper): 5,9 Vol %
- Expl. limit (lower): 0,9 Vol %

**Safety - GHS**

Signal Word: Warning

**Hazard Statements:**

H351: Suspected of causing cancer.  
H400: Very toxic to aquatic life.  
H410: Very toxic to aquatic life with long lasting effects.  
H302: Harmful if swallowed.

**Precautionary Statements:**

P280: Wear protective gloves / protective clothing / eye protection / face protection.  
P273: Avoid release to the environment.  
P301+P312: IF SWALLOWED: Call a POISON CENTER or doctor/physician if you feel unwell.  
P308+P313: IF exposed or concerned: Get medical advice / attention.  
P405: Store locked up.  
P501a: Dispose of contents / container in accordance with local / regional / national / international regulations.

**Transport/storage**

- ADR: 4.1 F1 III • UN 1334 • NAPHTHALENE, CRUDE or NAPHTHALENE, REFINED
- IMDG: 4.1 III • UN 1334 • NAPHTHALENE, CRUDE
- IATA/ICAO: 4.1 III • UN 1334 • NAPHTHALENE, CRUDE
- PAX: 419
- CAO: 420
- 10°C - 30°C