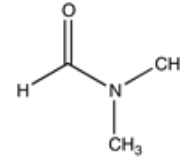


Identification

C₃H₇NO
M = 73,10 g/mol
CAS [68-12-2]
EC number: 200-679-5
Taric code: 2924 19 00

**Synonyms**

DMF, Formic acid dimethylamide

Applications

solvents, synthesis of organic products.

Specifications

| | | | |
|-----------------------------|---------------|--|-------------|
| assay (G.C.)..... | min. 99,5 % | free alkali (as (CH ₃) ₂ NH)..... | max. 0,1 % |
| identity (IR-spectrum)..... | passes test | residue on evaporation..... | max. 0,02 % |
| density (20°/4°)..... | 0,948 - 0,950 | water (K.F.)..... | max. 0,2 % |

Physical data

- Density: 0,94 g/cm³
- Solub. in water: (20 °C): miscible
- Melting point: -61 °C
- Boiling point: 153 °C
- Flash point: 58 °C
- Ignition temperature: 410 °C
- Vapour pressure: (20 °C) 3,77 hPa
- Refraction index: (n 20 °C/D) 1,4305
- Viscosity: (20 °C) 0,8 mPas
- Dipolar moment: (20 °C) 3,8 Debye
- Dielectric const.: (20 °C) 36,7
- Saturation conc.: (20 °C) 12 g/m³
- Expl. limit (upper): 16 Vol%
- Expl. limit (lower): 2,2 Vol%
- pH(200 g/l H₂O, 20 °C) 7
- Hygroscopic

Safety - GHS

Signal Word: Danger

Hazard Statements:

H226: Flammable liquid and vapour.
H312+H332: Harmful in contact with skin or if inhaled.
H319: Causes serious eye irritation.
H360D: May damage the unborn child.

**Precautionary Statements:**

P210: Keep away from heat / sparks / open flames / hot surfaces. - No smoking.
P303+P361+P353: IF ON SKIN (or hair): Remove / Take off immediately all contaminated clothing. Rinse skin with water / shower.
P305+P351+P338: IF IN EYES: Rinse cautiously with water for several minutes. Remove contact lenses, if present and easy to do. Continue rinsing.
P370+P378: In case of fire: Use ... for extinction.
P405: Store locked up.
P501a: Dispose of contents / container in accordance with local / regional / national / international regulations.

Transport/storage

- ADR: 3 F1 III • UN 2265 • N,N-DIMETHYL-FORMAMIDE
- IMDG: 3 III • UN 2265 • N,N-DIMETHYLFORMAMIDE
- IATA/ICAO: 3 III • UN 2265 • N,N-DIMETHYLFORMAMIDE
- PAX: 355
- CAO: 366
- 10°C - 30°C