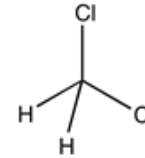


Dichloromethane, 99,9%, anhydrous (max. 0,003% H₂O), stabilized with approx. 50 ppm of amylene

Identification

CH₂Cl₂
 M = 84,93 g/mol
 CAS [75-09-2]
 EC number: 200-838-9
 Taric code: 2903 12 00


Synonyms

Methylene chloride, Chloromethylene

Applications

solvents, analytical chemistry.

Specifications

assay (G.C.).....	min. 99,9 %	copper (Cu).....	max. 0,02 ppm
identity (IR-spectrum).....	passes test	iron (Fe).....	max. 0,1 ppm
density (20°/4°).....	1,323 - 1,327	lead (Pb).....	max. 0,1 ppm
appearance.....	clear	magnesium (Mg).....	max. 0,1 ppm
colour (Hazen).....	max. 10	manganese (Mn).....	max. 0,02 ppm
acidity.....	max. 0,0002 meq/g	molybdenum (Mo).....	max. 0,02 ppm
alkalinity.....	max. 0,0002 meq/g	nickel (Ni).....	max. 0,02 ppm
free chlorine (as Cl).....	max. 0,00002 %	tin (Sn).....	max. 0,1 ppm
chlorides (Cl).....	max. 0,0001 %	zinc (Zn).....	max. 0,1 ppm
aluminium (Al).....	max. 0,5 ppm	carbon tetrachloride (G.C.).....	max. 0,005 %
barium (Ba).....	max. 0,1 ppm	chloroform (G.C.).....	max. 0,005 %
boron (B).....	max. 0,02 ppm	ethanol (G.C.).....	max. 0,02 %
cadmium (Cd).....	max. 0,05 ppm	methanol (G.C.).....	max. 0,01 %
calcium (Ca).....	max. 0,5 ppm	formaldehyde.....	max. 0,0005 %
chromium (Cr).....	max. 0,02 ppm	residue on evaporation.....	max. 0,0005 %
cobalt (Co).....	max. 0,02 ppm	water (K.F.).....	max. 0,003 %

Physical data

- Density: 1,32 g/cm³
- Solub. in water: (20 °C): 20 g/l
- Melting point: ~ -95 °C
- Boiling point: 40 °C
- Ignition temperature: 605 °C
- Vapour pressure: (20 °C) 475 hPa
- Viscosity: (20 °C) 0,43 mPas
- Dipolar moment: (20 °C) 1,6 Debye
- Dielectric const.: (20 °C) 9,1
- Evap. heat: (40 °C) 329 KJ/kg
- Saturation conc.: (20°C) 1549 g/m³
- Expl. limit (upper): 22 Vol%
- Expl. limit (lower): 13 Vol%
- pH(20 °C) 7

Safety - GHS

Signal Word: Warning

Hazard Statements:

- H315: Causes skin irritation.
 H319: Causes serious eye irritation.
 H335: May cause respiratory irritation.
 H336: May cause drowsiness or dizziness.
 H351: Suspected of causing cancer.
 H373: May cause damage to organs through prolonged or repeated exposure.


Precautionary Statements:

- P260: Do not breathe dust / fume / gas / mist / vapours / spray.
 P280: Wear protective gloves / protective clothing / eye protection / face protection.
 P305+P351+P338: IF IN EYES: Rinse cautiously with water for several minutes. Remove contact lenses, if present and easy to do. Continue rinsing.
 P321: Specific treatment (see on this label).
 P405: Store locked up.
 P501a: Dispose of contents / container in accordance with local / regional / national / international regulations.

Dichloromethane, 99,9%, anhydrous (max. 0,003% H₂O), stabilized with approx. 50 ppm of amylene

Transport/storage

- ADR: 6.1 T1 III • UN 1593 • DICHLOROMETHANE
- IMDG: 6.1 III • UN 1593 • DICHLOROMETHANE
- IATA/ICAO: 6.1 III • UN 1593 • DICHLOROMETHANE
- PAX: 655
- CAO: 663
- 10°C - 30°C