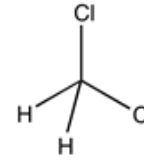


Dichloromethane, GC-MS, suitable for nitrosamine analysis

Identification

CH₂Cl₂
M = 84,93 g/mol
CAS [75-09-2]
EC number: 200-838-9
Taric code: 2903 12 00

**Synonyms**

Methylene chloride, Chloromethylene

Specifications

assay (G.C.).....	min. 99,8 %	water (K.F.)	max . 0,05 %
colour (Hazen).....	max. 10	GC/MSD (retention range n-undecane to n-tetracontane, scanning area 30 - 600 amu, individual signals (n-tetradecane standard))	max. 3,0 ng/ml (ppb)
identity (IR-spectrum).....	passes test		
nitrosamine analysis.....	passes test		
residue on evaporation.....	max. 3 ppm		

Suitable for residue analysis

Physical data

- Density: 1,32 g/cm³
- Solub. in water: (20 °C): 20 g/l
- Melting point: ~ -95 °C
- Boiling point: 40 °C
- Ignition temperature: 605 °C
- Vapour pressure: (20 °C) 475 hPa
- Viscosity: (20 °C) 0,43 mPas
- Dipolar moment: (20 °C) 1,6 Debye
- Dielectric const.: (20 °C) 9,1
- Evap. heat: (40 °C) 329 KJ/kg
- Saturation conc.: (20°C) 1549 g/m³
- Expl. limit (upper): 22 Vol%
- Expl. limit (lower): 13 Vol%
- pH(20 °C) 7

Safety - GHS

Signal Word: Warning

Hazard Statements:

- H315: Causes skin irritation.
- H319: Causes serious eye irritation.
- H335: May cause respiratory irritation.
- H336: May cause drowsiness or dizziness.
- H351: Suspected of causing cancer.
- H373: May cause damage to organs through prolonged or repeated exposure.

**Precautionary Statements:**

- P260: Do not breathe dust / fume / gas / mist / vapours / spray.
- P280: Wear protective gloves / protective clothing / eye protection / face protection.
- P305+P351+P338: IF IN EYES: Rinse cautiously with water for several minutes. Remove contact lenses, if present and easy to do. Continue rinsing.
- P321: Specific treatment (see on this label).
- P405: Store locked up.
- P501a: Dispose of contents / container in accordance with local / regional / national / international regulations.

Transport/storage

- ADR: 6.1 T1 III • UN 1593 • DICHLOROMETHANE
- IMDG: 6.1 III • UN 1593 • DICHLOROMETHANE
- IATA/ICAO: 6.1 III • UN 1593 • DICHLOROMETHANE
- PAX: 655
- CAO: 663
- 10°C - 30°C