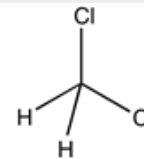


Dichloromethane, for GC residue analysis, stabilized with approx. 50 ppm of amylene

Identification

CH₂Cl₂
M = 84,93 g/mol
CAS [75-09-2]
EC number: 200-838-9
Taric code: 2903 12 00



Synonyms

Methylene chloride, Chloromethylene

Applications

solvents, analytical chemistry.

Specifications

assay (G.C.)..... min.99,9 %
identity (IR-spectrum)..... passes test
density (20°/4°)..... 1,323 - 1,327
residue on evaporation..... max. 0,0001 %
water (K.F.)..... max. 0,02 %

Suitable for organohalogenated pesticide and dioxins, furans and PCBs residue analysis

ECD, from 1,2,4-trichlorobenzene to decachlorobiphenyl, no peaks are obtained greater than 3 pg/ml as lindane.

No peaks are obtained in vicinity of 2,4,5-trichlorobiphenyl.

Suitable for pesticide and polycyclic aromatic hydrocarbons residue analysis

FID, from 1-octanol to 1-tetradecanol, no peaks are obtained greater than 5 ng/ml as 1-tetradecanol. No peaks are obtained in vicinity of pyrene.

Physical data

- Density: 1,32 g/cm³
- Solub. in water: (20 °C): 20 g/l
- Melting point: ~ -95 °C
- Boiling point: 40 °C
- Ignition temperature: 605 °C
- Vapour pressure: (20 °C) 475 hPa
- Viscosity: (20 °C) 0,43 mPas
- Dipolar moment: (20 °C) 1,6 Debye
- Dielectric const.: (20 °C) 9,1
- Evap. heat: (40 °C) 329 KJ/kg
- Saturation conc.: (20°C) 1549 g/m³
- Expl. limit (upper): 22 Vol%
- Expl. limit (lower): 13 Vol%
- pH(20 °C) 7

Safety - GHS

Signal Word: Warning

Hazard Statements:

- H315: Causes skin irritation.
H319: Causes serious eye irritation.
H335: May cause respiratory irritation.
H336: May cause drowsiness or dizziness.
H351: Suspected of causing cancer.
H373: May cause damage to organs through prolonged or repeated exposure.



Precautionary Statements:

- P260: Do not breathe dust / fume / gas / mist / vapours / spray.
P280: Wear protective gloves / protective clothing / eye protection / face protection.
P305+P351+P338: IF IN EYES: Rinse cautiously with water for several minutes. Remove contact lenses, if present and easy to do. Continue rinsing.
P321: Specific treatment (see on this label).
P405: Store locked up.
P501a: Dispose of contents / container in accordance with local / regional / national / international regulations.



CL0345

Technical Data Sheet

Dichloromethane, for GC residue analysis, stabilized with approx. 50 ppm of amylene

Transport/storage

- ADR: 6.1 T1 III • UN 1593 • DICHLOROMETHANE
- IMDG: 6.1 III • UN 1593 • DICHLOROMETHANE
- IATA/ICAO: 6.1 III • UN 1593 • DICHLOROMETHANE
- PAX: 655
- CAO: 663
- 15°C - 25°C