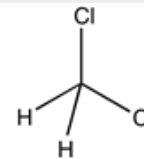


Dichloromethane, dried (max. 0,005% H₂O), for analysis, ExpertQ®, stabilized with approx. 50 ppm of amylene
Identification

CH₂Cl₂
 M = 84,93 g/mol
 CAS [75-09-2]
 EC number: 200-838-9
 Taric code: 2903 12 00


Synonyms

Methylene chloride, Chloromethylene

Applications

solvents, analytical chemistry.

Specifications

| | | | |
|-----------------------------|-------------------|----------------------------------|---------------|
| assay (G.C.)..... | min. 99,9 % | copper (Cu)..... | max. 0,02 ppm |
| identity (IR-spectrum)..... | passes test | iron (Fe)..... | max. 0,1 ppm |
| density (20°/4°)..... | 1,323 - 1,327 | lead (Pb)..... | max. 0,1 ppm |
| colour (Hazen)..... | max. 10 | magnesium (Mg)..... | max. 0,1 ppm |
| acidity..... | max. 0,0005 meq/g | manganese (Mn)..... | max. 0,02 ppm |
| alkalinity..... | max. 0,0002 meq/g | nickel (Ni)..... | max. 0,02 ppm |
| free chlorine (as Cl)..... | max. 0,00003 % | tin (Sn)..... | max. 0,1 ppm |
| aluminium (Al)..... | max. 0,5 ppm | zinc (Zn)..... | max. 0,1 ppm |
| barium (Ba)..... | max. 0,1 ppm | carbon tetrachloride (G.C.)..... | max. 0,01 % |
| boron (B)..... | max. 0,02 ppm | chloroform (G.C.)..... | max. 0,01 % |
| cadmium (Cd)..... | max. 0,05 ppm | ethanol (G.C.)..... | max. 0,02 % |
| calcium (Ca)..... | max. 0,5 ppm | methanol (G.C.)..... | max. 0,01 % |
| chromium (Cr)..... | max. 0,02 ppm | formaldehyde..... | max. 0,0005 % |
| cobalt (Co)..... | max. 0,02 ppm | residue on evaporation..... | max. 0,0005 % |
| | | water (K.F.)..... | max. 0,005 % |

Physical data

- Density: 1,32 g/cm³
- Solub. in water: (20 °C): 20 g/l
- Melting point: ~ -95 °C
- Boiling point: 40 °C
- Ignition temperature: 605 °C
- Vapour pressure: (20 °C) 475 hPa
- Viscosity: (20 °C) 0,43 mPas
- Dipolar moment: (20 °C) 1,6 Debye
- Dielectric const.: (20 °C) 9,1
- Evap. heat: (40 °C) 329 KJ/kg
- Saturation conc.: (20°C) 1549 g/m³
- Expl. limit (upper): 22 Vol%
- Expl. limit (lower): 13 Vol%
- pH(20 °C) 7

Safety - GHS

Signal Word: Warning


Hazard Statements:

- H315: Causes skin irritation.
- H319: Causes serious eye irritation.
- H335: May cause respiratory irritation.
- H336: May cause drowsiness or dizziness.
- H351: Suspected of causing cancer.
- H373: May cause damage to organs through prolonged or repeated exposure.

Precautionary Statements:

- P260: Do not breathe dust / fume / gas / mist / vapours / spray.
- P280: Wear protective gloves / protective clothing / eye protection / face protection.
- P305+P351+P338: IF IN EYES: Rinse cautiously with water for several minutes. Remove contact lenses, if present and easy to do. Continue rinsing.
- P321: Specific treatment (see on this label).
- P405: Store locked up.
- P501a: Dispose of contents / container in accordance with local / regional / national / international regulations.



CL0338

Technical Data Sheet

Dichloromethane, dried (max. 0,005% H₂O), for analysis, ExpertQ®,
stabilized with approx. 50 ppm of amylene

Transport/storage

- ADR: 6.1 T1 III • UN 1593 • DICHLOROMETHANE
- IMDG: 6.1 III • UN 1593 • DICHLOROMETHANE
- IATA/ICAO: 6.1 III • UN 1593 • DICHLOROMETHANE
- PAX: 655
- CAO: 663
- 10°C - 30°C