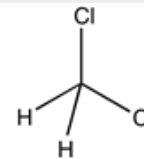


**Dichloromethane, stabilized with approx. 50 ppm of amylene,
Pharmpur®, Ph Eur, BP, NF****Identification**

CH₂Cl₂
M = 84,93 g/mol
CAS [75-09-2]
EC number: 200-838-9
Taric code: 2903 12 00

**Synonyms**

Methylene chloride, Chloromethylene

Applications

solvents, analytical chemistry, in pharma industry.

Specifications

assay (G.C.).....	min. 99,0 %	acidity.....	passes test
identity (IR-spectrum).....	passes test	limit of hydrogen chloride.....	max. 0,001 %
Identification D (EP).....	passes test	Ethanol, 2-methylbut-2-ene and volatile impurities:	
Identification E (EP).....	passes test	2-methylbut-2-ene.....	max. 300 ppm
appearance.....	clear and colourless	ethanol (G.C.).....	max. 2,0 %
density (20°/20°).....	1,320 - 1,332	carbon tetrachloride (G.C.).....	max. 10 ppm
density (25°/25°).....	1,318 - 1,322	chloroform (G.C.).....	max. 50 ppm
refractive index n ₂₀ /D.....	1,423 - 1,425	sum of impurities other than ethanol and 2-methylbut-2-ene	max. 0,1 %
free chlorine (EP).....	passes test	water (K.F.).....	max. 0,02 %
free chlorine (USP).....	passes test	residue on evaporation.....	max. 20 ppm

Physical data

- Density: 1,32 g/cm³
- Solub. in water: (20 °C): 20 g/l
- Melting point: ~ -95 °C
- Boiling point: 40 °C
- Ignition temperature: 605 °C
- Vapour pressure: (20 °C) 475 hPa
- Viscosity: (20 °C) 0,43 mPas
- Dipolar moment: (20 °C) 1,6 Debye
- Dielectric const.: (20 °C) 9,1
- Evap. heat: (40 °C) 329 KJ/kg
- Saturation conc.: (20°C) 1549 g/m³
- Expl. limit (upper): 22 Vol%
- Expl. limit (lower): 13 Vol%
- pH(20 °C) 7

Safety - GHS

Signal Word: Warning

Hazard Statements:

- H315: Causes skin irritation.
H319: Causes serious eye irritation.
H335: May cause respiratory irritation.
H336: May cause drowsiness or dizziness.
H351: Suspected of causing cancer.
H373: May cause damage to organs through prolonged or repeated exposure.

**Precautionary Statements:**

- P260: Do not breathe dust / fume / gas / mist / vapours / spray.
P280: Wear protective gloves / protective clothing / eye protection / face protection.
P305+P351+P338: IF IN EYES: Rinse cautiously with water for several minutes. Remove contact lenses, if present and easy to do. Continue rinsing.
P321: Specific treatment (see on this label).
P405: Store locked up.
P501a: Dispose of contents / container in accordance with local / regional / national / international regulations.



CL0331

Technical Data Sheet

Dichloromethane, stabilized with approx. 50 ppm of amylene,
Pharmpur®, Ph Eur, BP, NF

Transport/storage

- ADR: 6.1 T1 III • UN 1593 • DICHLOROMETHANE
- IMDG: 6.1 III • UN 1593 • DICHLOROMETHANE
- IATA/ICAO: 6.1 III • UN 1593 • DICHLOROMETHANE
- PAX: 655
- CAO: 663
- 10°C - 30°C