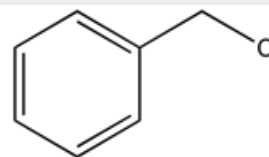


**Identification**

C<sub>7</sub>H<sub>7</sub>Cl  
M = 126,59 g/mol  
CAS [100-44-7]  
EC number: 202-853-6  
Taric code: 2903 99 90

**Synonyms**

α-Chlorotoluene, Chloromethylbenzene

**Applications**

perfumery, for pharmaceuticals synthesizing, manufacture of dyes, manufacturing of synthetic resins.

**Specifications**

assay (G.C.).....	min. 99 %	density (20°/4°).....	1,099 - 1,100
identity (IR-spectrum).....	passes test	residue on ignition (as SO <sub>4</sub> ).....	max. 0,005 %

**Physical data**

- Density: 1,10 g/cm<sup>3</sup>
- Solub. in water: (30 °C): 460 mg/l
- Melting point: -41,2 °C
- Boiling point: (79 hPa) 100 °C
- Flash point: 60 °C
- Ignition temperature: 585 °C
- Vapour pressure: (20 °C) 1,2 hPa
- Refraction index: (n 20 °C/D) 1,5380
- Expl. limit (upper): 14 Vol%
- Expl. limit (lower): 1,1 Vol%

**Safety - GHS**

**Signal Word:** Danger

**Hazard Statements:**

- H331: Toxic if inhaled.  
H350: May cause cancer.  
H373: May cause damage to organs through prolonged or repeated exposure.  
H318: Causes serious eye damage.  
H226: Flammable liquid and vapour.  
H302: Harmful if swallowed.  
H315: Causes skin irritation.  
H335: May cause respiratory irritation.

**Precautionary Statements:**

- P210: Keep away from heat / sparks / open flames / hot surfaces. - No smoking.  
P303+P361+P353: IF ON SKIN (or hair): Remove / Take off immediately all contaminated clothing. Rinse skin with water / shower.  
P305+P351+P338: IF IN EYES: Rinse cautiously with water for several minutes. Remove contact lenses, if present and easy to do. Continue rinsing.  
P310: Immediately call a POISON CENTER or doctor / physician.  
P370+P378: In case of fire: Use ... for extinction.  
P405: Store locked up.  
P501a: Dispose of contents / container in accordance with local / regional / national / international regulations.

**Transport/storage**

- ADR: 6.1 TC1 II • UN 1738 • BENZYL CHLORIDE
- IMDG: 6.1 II • UN 1738 • BENZYL CHLORIDE
- IATA/ICAO: 6.1 II • UN 1738 • BENZYL CHLORIDE
- PAX: 610
- CAO: 612
- 10°C - 30°C