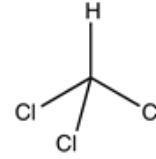


**Identification**

CHCl<sub>3</sub>  
M = 119,38 g/mol  
CAS [67-66-3]  
EC number: 200-663-8  
Taric code: 2903 13 00

**Synonyms**

Trichloromethane, Formyl trichloride

**Applications**

solvents, analytical chemistry, in the rubber industry, in pharma industry.

**Specifications**

assay (G.C.).....	99,0 - 99,6 %	copper (Cu).....	max. 0,2 ppm
identity (IR-spectrum).....	passes test	iron (Fe).....	max. 0,2 ppm
density (20°/20°).....	1,477 - 1,487	lead (Pb).....	max. 0,2 ppm
ethanol (G.C.).....	0,4 - 1,0 %	nickel (Ni).....	max. 0,2 ppm
acidity or alkalinity.....	passes test	aldehydes, ketones.....	passes test
free chlorine (as Cl).....	passes test	carbon tetrachloride (G.C.).....	max. 0,01 %
chlorides (Cl).....	max. 0,0002 %	residue on evaporation.....	max. 0,001 %
		water (K.F.).....	max. 0,05 %

**Physical data**

- Density: 1,47 g/cm<sup>3</sup>
- Solub. in water: (20 °C): 8 g/l
- Melting point: -63 °C
- Boiling point: 61 °C
- Ignition temperature: 982 °C
- Vapour pressure: (20° C) 213 hPa
- Viscosity: (20 °C) 0,56 mPas
- Dipolar moment: (20 °C) 1,01 Debye
- Dielectric const.: (20 °C) 4,8
- Saturation conc.: (20 °C) 1027 g/m<sup>3</sup>

**Safety - GHS**

**Signal Word:** Danger

**Hazard Statements:**

- H302: Harmful if swallowed.  
H315: Causes skin irritation.  
H319: Causes serious eye irritation.  
H331: Toxic if inhaled.  
H351: Suspected of causing cancer.  
H361d: Suspected of damaging the unborn child.  
H372: Causes damage to organs through prolonged or repeated exposure.

**Precautionary Statements:**

- P260: Do not breathe dust / fume / gas / mist / vapours / spray.  
P280: Wear protective gloves / protective clothing / eye protection / face protection.  
P305+P351+P338: IF IN EYES: Rinse cautiously with water for several minutes. Remove contact lenses, if present and easy to do. Continue rinsing.  
P321: Specific treatment (see on this label).  
P405: Store locked up.  
P501a: Dispose of contents / container in accordance with local / regional / national / international regulations.

**Transport/storage**

- ADR: 6.1 T1 III • UN 1888 • CHLOROFORM
- IMDG: 6.1 III • UN 1888 • CHLOROFORM
- IATA/ICAO: 6.1 III • UN 1888 • CHLOROFORM
- PAX: 680
- CAO: 680
- 15°C - 25°C