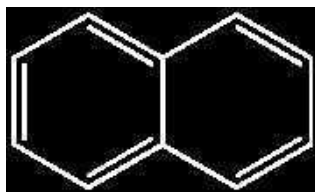


NAPHTHALENE



- Synonyms: Naphthalin
- $C_{10}H_8$
- M = 128,16 g/mol
- CAS [91-20-3]
- EINECS-No.: 202-049-5
- Solub. in water: (20 °C): 0,3 g/l
- Melting point: 79 - 82 °C
- Boiling point: 218 °C
- Flash pt. 80 °C
- Ignition temp.: 540 °C
- Vapour pressure: (20 °C) 0,066 hPa
- LD 50 (oral, rat): > 2000 mg/kg

- EC-Index-No.: 601-052-00-2
- ADR: 4.1 F1 III UN 1334
- IMDG: 4.1 III UN 1334
- IATA/ICAO: 4.1 III UN 1334
- GHS-signal word: Warning
- GHS-H sentences: H351 - H400 - H410 - H302
- GHS-P sentences: P281 - P273 - P264 - P308 + P313 - P405 - P501a
- Tariff number: 2902 90 00 00
- Applications: synthesis of organic products, manufacture of dyes, manufacturing of synthetic resins, for pharmaceutical use.

NA0024 Naphthalene, pellets approx. 3 - 4 mm, EssentQ®



assay (G.C.)min. 99 %
identity (IR-spectrum)passes test
residue on ignitionmax. 0,02 %
water (K.F.)max. 0,3 %

ART. NO.	VOLUME	CONTAINER
NA00240500	500 g	Ⓜ
NA00241000	1 kg	Ⓜ

ART. NO.	VOLUME	CONTAINER
NA0024005P	5 kg	Ⓜ
NA0024025P	25 kg	Ⓜ

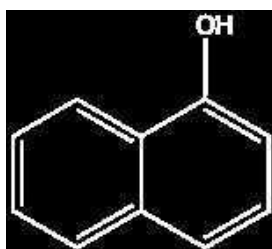
NA0026 Naphthalene, pellets approx. 3 - 4 mm, ExpertQ®, for analysis



assay (G.C.)min. 99,5 %
identity (IR-spectrum)passes test
residue on ignitionmax. 0,01 %
water (K.F.)max. 0,2 %

ART. NO.	VOLUME	CONTAINER
NA00261000	1 kg	Ⓜ

1-NAPHTHOL



- Synonyms: 1-Hydroxynaphthalene
- $C_{10}H_8O$
- M = 144,17 g/mol
- CAS [90-15-3]
- EINECS-No.: 201-969-4
- Solub. in water: (20 °C): ~ 0,1 g/l
- Melting point: 95 - 97 °C
- Boiling point: ~ 288 °C
- Flash pt. 125 °C
- Ignition temp.: 510 °C
- Vapour pressure: (94 °C) 1,3 hPa
- LD 50 (oral, rat): 275 mg/kg
- EC-Index-No.: 604-029-00-5

- ADR: 6.1 T2 III UN 2811
- IMDG: 6.1 III UN 2811
- IATA/ICAO: 6.1 III UN 2811
- GHS-signal word: Danger
- GHS-H sentences: H318 - H302 - H312 - H335 - H315
- GHS-P sentences: P261 - P280 - P305 + P351 + P338 - P321 - P405 - P501a
- Tariff number: 2907 15 10 00
- Applications: analytical chemistry, synthesis of organic products, manufacture of dyes and perfumery.

NA0110 1-Naphthol, EssentQ®



assay (G.C.)min. 99 %
identity (IR-spectrum)passes test
residue on ignitionmax. 0,1 %
water (K.F.)max. 0,5 %

ART. NO.	VOLUME	CONTAINER
NA01100250	250 g	Ⓜ

ART. NO.	VOLUME	CONTAINER
NA01101000	1 kg	Ⓜ

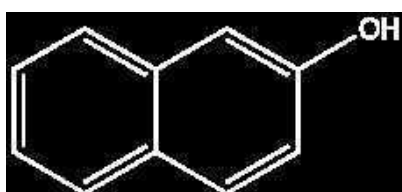
NA0112 1-Naphthol, ExpertQ®, for analysis, Reag. Ph Eur



assay (G.C.)min. 99 %
identity (IR-spectrum)passes test
appearance of solutionpasses test
chlorides (Cl)max. 0,005 %
heavy metals (as Pb)max. 0,001 %
iron (Fe)max. 0,001 %
naphthalene (G.C.)max. 0,2 %
2-naphthol (G.C.)max. 0,2 %
residue on ignitionmax. 0,05 %
water (K.F.)max. 0,2 %

ART. NO.	VOLUME	CONTAINER
NA01120250	250 g	Ⓜ

2-NAPHTHOL



- Synonyms: 2-Hydroxynaphthalene
- $C_{10}H_8O$
- M = 144,17 g/mol
- CAS [135-19-3]
- EINECS-No.: 205-182-7
- Solub. in water: (20 °C): 1 g/l
- Melting point: 121,6 °C
- Boiling point: 285 °C
- Flash pt. 153 °C
- Vapour pressure: (30 °C) < 0,1 hPa
- LD 50 (oral, rat): 1960 mg/kg
- EC-Index-No.: 604-007-00-5

- ADR: 9 M7 III UN 3077
- IMDG: 9 III UN 3077
- IATA/ICAO: 9 III UN 3077
- GHS-signal word: Warning
- GHS-H sentences: H400 - H302 - H332
- GHS-P sentences: P261 - P273 - P264 - P270 - P304 + P340 - P501a
- Tariff number: 2907 15 90 00
- Applications: analytical chemistry, for pharmaceutical use, manufacture of dyes, perfumery, in the rubber industry.