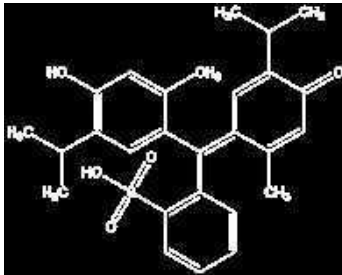


THYMOL BLUE

AZ0225 Thymol blue, indicator, ACS



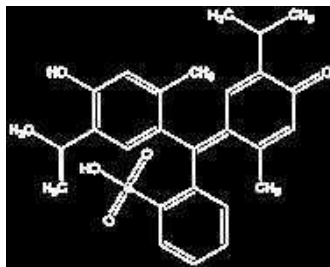
- Synonyms: Thymolsulfonphthalein, TB
- $C_{27}H_{30}O_5$
- $M = 466,60$ g/mol
- CAS [76-61-9]
- EINECS-No.: 200-973-3
- Melting point: 221 °C
- Tariff number: 2934 99 90 90
- Applications: analytical chemistry, laboratory reagent, indicator.

pH range 1: pink
to brownish yellow 1,2 - 2,8
pH range 2: greenish-yellow
to blue 8,0 - 9,2
Absorption max λ_1 (pH 1,2) 543 - 547 nm
Absorption max λ_2 (pH 2,8) 431 - 436 nm
Absorption max λ_3 (pH 7,8) 431 - 436 nm
Absorption max λ_4 (pH 9,5) 594 - 598 nm
Absorptivity (A1%/1 cm; λ_1 , pH 1,2
on dried sample) 400 - 500
Absorptivity (A1%/1 cm; λ_2 , pH 2,8
on dried sample) 200 - 300
Absorptivity (A1%/1 cm; λ_3 , pH 7,8
on dried sample) 200 - 300
Absorptivity (A1%/1 cm; λ_4 , pH 9,5
on dried sample) 450 - 550
loss on drying (110 °C) max. 3 %

ART. NO.	VOLUME	CONTAINER
AZ02250005	5 g	0
AZ02250025	25 g	0

THYMOL BLUE, SOLUTION 0,04%

AZ0226 Thymol blue, solution 0,04%, indicator



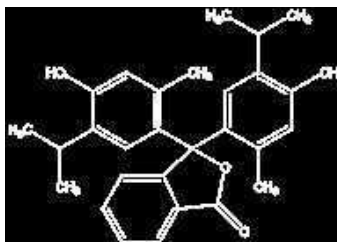
- Synonyms: Thymolsulfonphthalein, TB
- $C_{27}H_{30}O_5$
- $M = 466,60$ g/mol
- CAS [76-61-9]
- EINECS-No.: 200-973-3
- Flash pt. 49
- ADR: 3 F1 III UN 1993
- IMDG: 3 III UN 1993
- IATA/ICAO: 3 III UN 1993
- GHS-signal word: Warning
- GHS-H sentences: H226
- GHS-P sentences: P210 - P241 - P280 - P240 - P303 + P361 + P353 - P501a
- Tariff number: 2934 99 90 90
- Applications: analytical chemistry, laboratory reagent, indicator.

pH range (red to yellow) 1,2 - 2,8
pH range (yellow to blue) 8,0 - 9,6

ART. NO.	VOLUME	CONTAINER
AZ02260100	100 ml	0

THYMOLPHTHALEIN

T10100 Thymolphthalein, indicator, ExpertQ®, for analysis, ACS



- $C_{28}H_{30}O_4$
- $M = 430,55$ g/mol
- CAS [125-20-2]
- EINECS-No.: 204-729-7
- Solub. in water: (20 °C): almost insoluble
- Melting point: 253 °C
- Tariff number: 2932 20 90 90
- Applications: analytical chemistry, laboratory reagent, indicator.

identity (UV-VIS spectroscopy) passes test
appearance of solution passes test
pH range (colourless to blue) 8,8 - 10,5
Absorption maximum λ (pH 10,5) 592 - 596 nm
Absorptivity (A1%/1 cm; λ_{max} , 0,01 g/l,
pH 10,5, on dried sample) 800 - 900
loss on drying (110 °C) max. 1,0 %

ART. NO.	VOLUME	CONTAINER
T101000005	5 g	0
T101000025	25 g	0

TIN

ES0051 Tin, granulated (1 - 3 mm), EssentQ®, Reag. Ph Eur

- Sn
- $M = 118,69$ g/mol
- CAS [7440-31-5]
- EINECS-No.: 231-141-8
- Solub. in water: (20 °C): insoluble
- Melting point: 232 °C
- Boiling point: 2362 °C
- Tariff number: 8007 00 30 00
- Applications: analytical chemistry, laboratory reagent, reducing agent, in galvanotechnia (corrosion inhibitor), metal alloys, in the electronic industry, painting.

antimony (Sb) max. 2 ppm
arsenic (As) max. 0,01 %
bismuth (Bi) max. 0,01 %
copper (Cu) max. 0,005 %
iron (Fe) max. 0,02 %
lead (Pb) max. 0,01 %

ART. NO.	VOLUME	CONTAINER
ES00510100	100 g	0
ES00510250	250 g	0